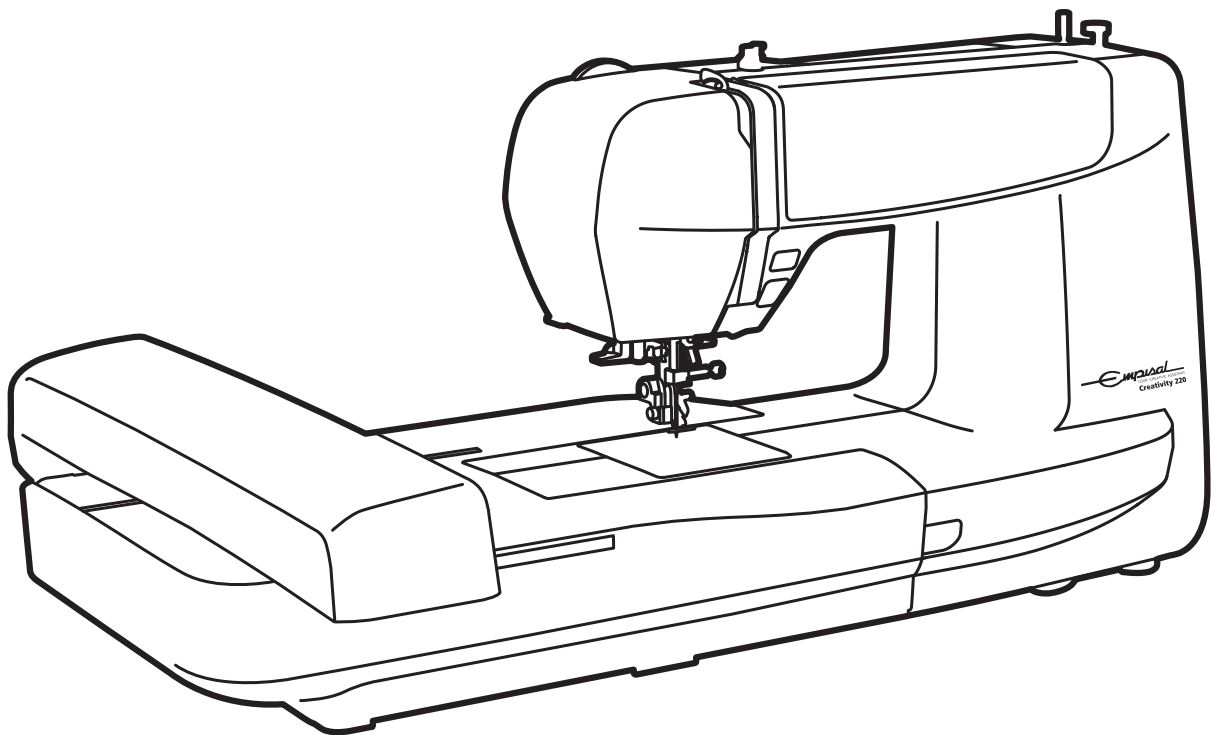


Empisal
YOUR CREATIVE ASSISTANT

EEMC220 Embroidery Machine

WIFI COMPATIBLE



MANUAL



Quick Start Guide

Machine Introduction

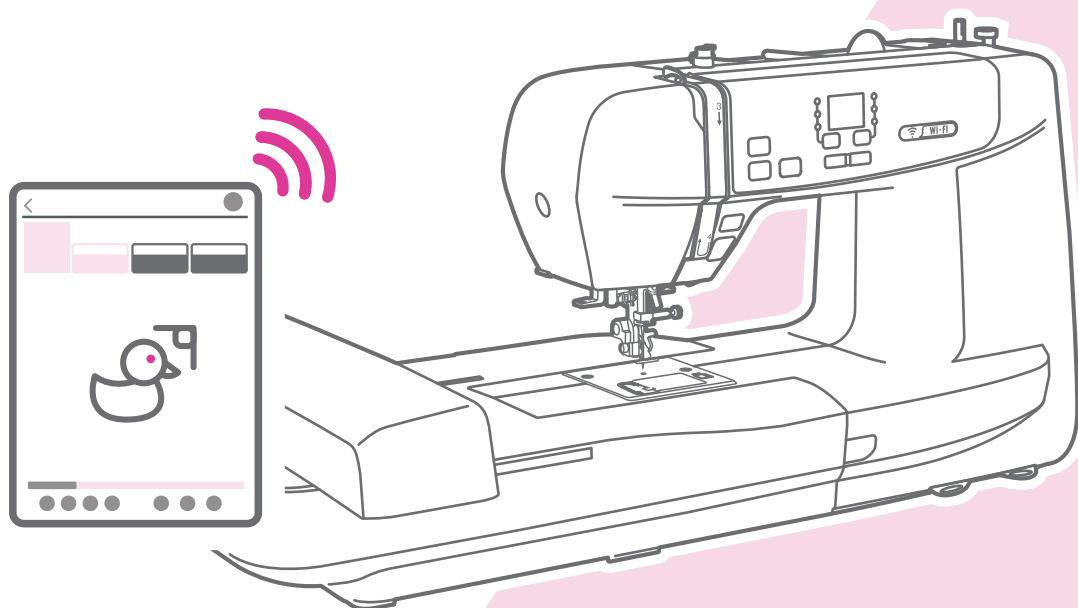
- 1 Principal parts of the machine
- 2 Operation buttons
- 2 Accessories

Machine Setup

- 3 Winding the bobbin
- 5 Threading the upper thread

Embroidery Process

- 7 Hooping the fabric
- 8 Preparation for embroidery



MyPatterns



Download EZ Design software, manual and tutorial videos through the website:
<https://ezsupport.info/guide/cha02.php>

Important safety instructions

When using an electrical appliance, basic safety should always be followed, including the following:

Read all instructions before using this machine.

DANGER - To reduce the risk of electric shock:

1. An appliance should never be left unattended when plugged in.
2. Always unplug this appliance from the electric outlet immediately after using and before cleaning.

WARNING - To reduce the risk of burns, fire, electric shock, or injury to persons:

1. Read the instruction carefully before you use the machine
2. Keep the instructions at a suitable place close to the machine and hand it over if you give the machine to a third party.
3. Use the machine only in dry locations.
4. Never leave the machine unattended with children or elderly people as they may not be able to estimate the risk.
5. This appliance can be used by children aged from 8 years and above and persons with reduced physical, sensory or mental capabilities or lack of experience and knowledge if they have been given supervision or instruction concerning use of the appliance in a safe way and understand the hazards involved.
6. Children shall not play with the appliance.
7. Cleaning and user maintenance shall not be made by children without supervision.
8. Always switch off the machine if you carry out preparation for work (change the needle, feed the yarn through the machine, change the footer, etc.).
9. Always unplug the machine if you leave it unattended, to avoid injury by expediently switch on the machine.
10. Always unplug the machine if you carry out maintenance (oiling, cleaning).
11. Don't use the machine if it's wet or in humid environment.
12. Never pull at the cord, always unplug the machine by gripping the plug.
13. If the LED lamp is damaged or broken, it must be replaced by the manufacturer or it's service agent or a similarly qualified person, in order to avoid a hazard.
14. Never use the machine if the air vents are blocked, keep the air vents of the

machine free from dust, fusel and leftovers.

15. The sound pressure level at normal operation is smaller than 75dB(A).
16. Do not dispose of electrical appliances as unsorted municipal waste, use separate collection facilities.
17. Contact your local government for information regarding the collection systems available.
18. If electrical appliances are disposed of in landfills or dumps, hazardous substances can leak into the groundwater and get into the food chain, damaging your health and well-being.
19. When replacing old appliances with new ones, the retailer is legally obligated to take back your old appliance for disposal at least for free of charge.
20. The appliance is not to be used by persons (including children) with reduced physical, sensory or mental capabilities, or lack of experience and knowledge, unless they have been given supervision or instruction. (For outside Europe)
21. Children being supervised not to play with the appliance. (For outside Europe)

SAVE THESE INSTRUCTIONS

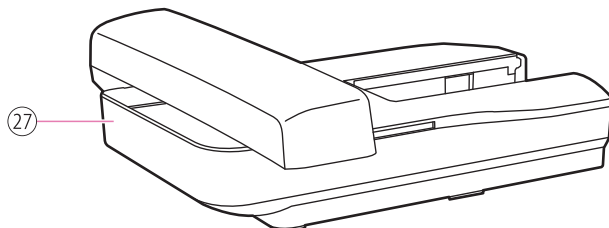
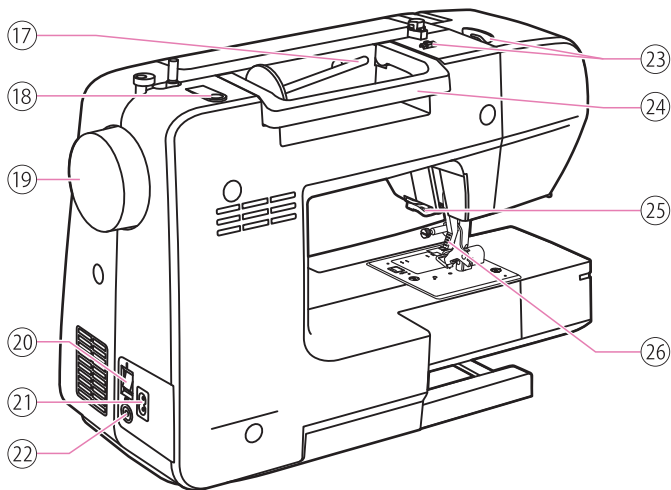
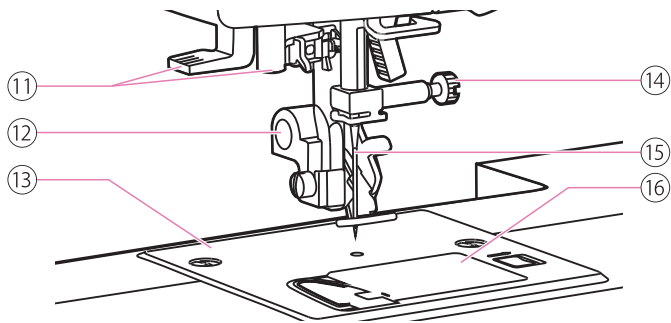
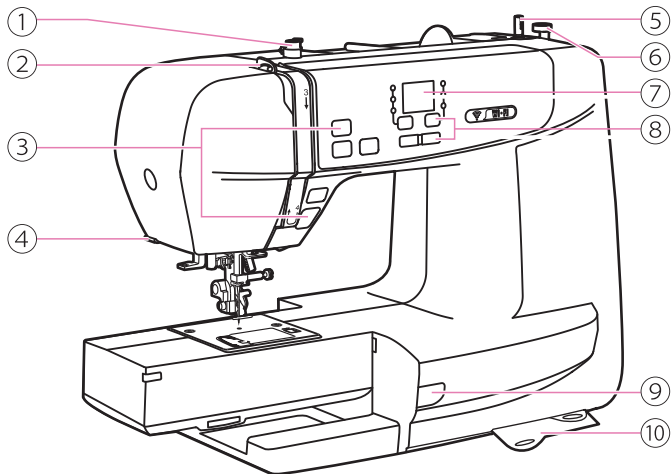
This machine is intended for household use only.

Be sure to use the machine in the temperature range from 5°C to 40°C.
If the temperature is excessively low, the machine can fail to operate normally.

To carry the machine, hold the carrying handle with your hand, and support the machine with the other hand.

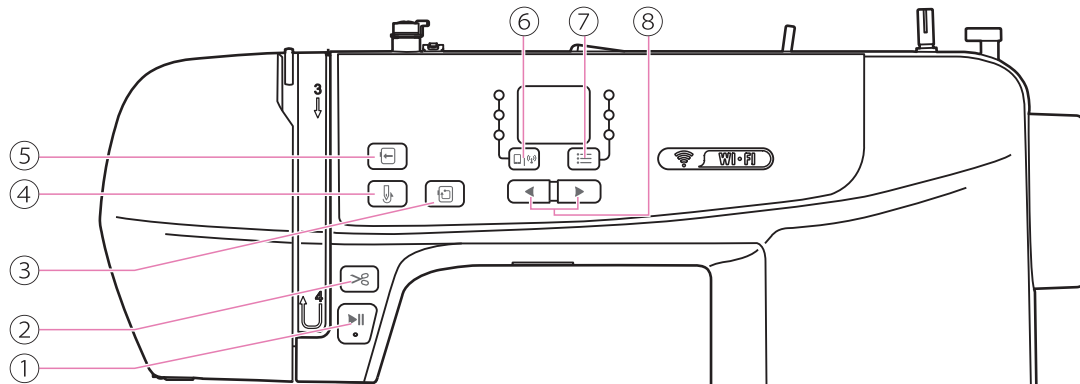
Machine Introduction

Principal parts of the machine



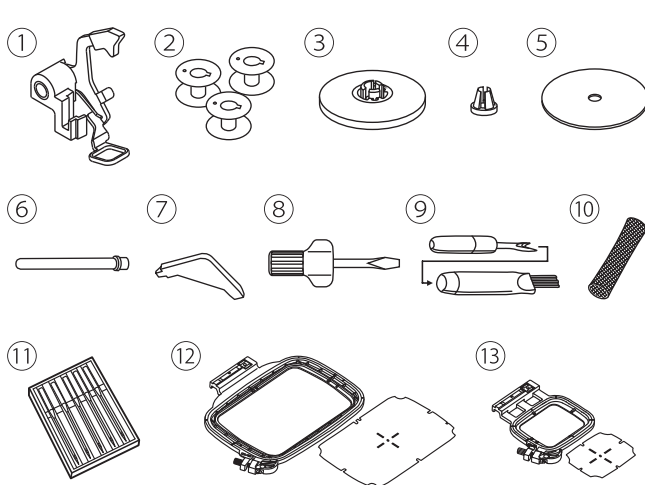
- ① Bobbin thread guide
- ② Take-up lever
- ③ Operation buttons
- ④ Thread cutter
- ⑤ Bobbin winder spindle
- ⑥ Bobbin winder stopper
- ⑦ Screen
- ⑧ Operation buttons
- ⑨ Status indicator
- ⑩ Quick reference plate
- ⑪ Needle threader
- ⑫ Presser foot
- ⑬ Needle plate
- ⑭ Needle clamp screw
- ⑮ Needle
- ⑯ Bobbin cover
- ⑰ Horizontal spool pin
- ⑱ Second spool pin hole
- ⑲ Handwheel
- ⑳ Main power switch
- ㉑ Power cord socket
- ㉒ Firmware update socket
- ㉓ Upper thread guide
- ㉔ Handle
- ㉕ Thread cutter
- ㉖ Presser foot lifter
- ㉗ Embroidery unit

Operation buttons



- | | |
|--|---|
| <ul style="list-style-type: none"> ① Start/stop button ② Thread cutter button ③ Check motif size button ④ Bring up the bobbin thread button ⑤ Hoop relocater button | <ul style="list-style-type: none"> ⑥ Connection mode button ⑦ Setting switch button (stitch count/color layer/thread tension) ⑧ Value setting button (stitch count/color layer/thread tension) |
|--|---|

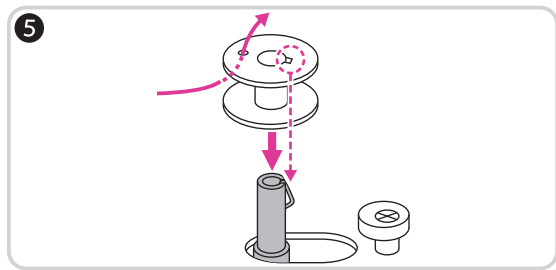
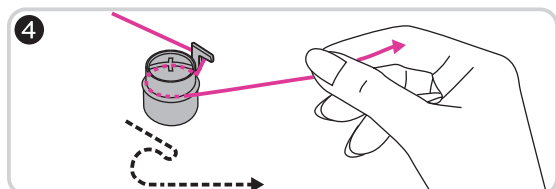
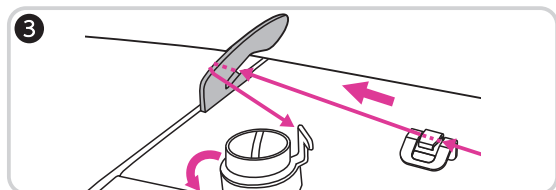
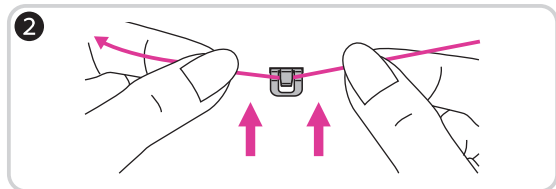
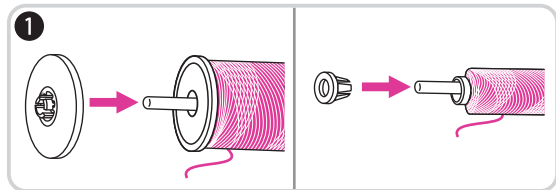
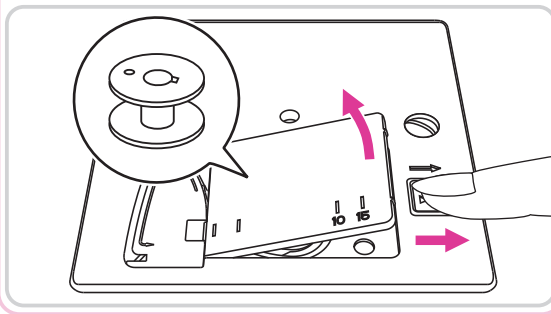
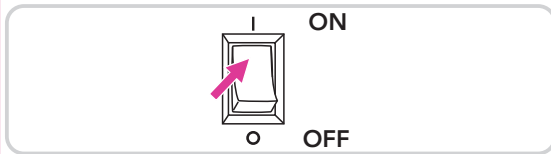
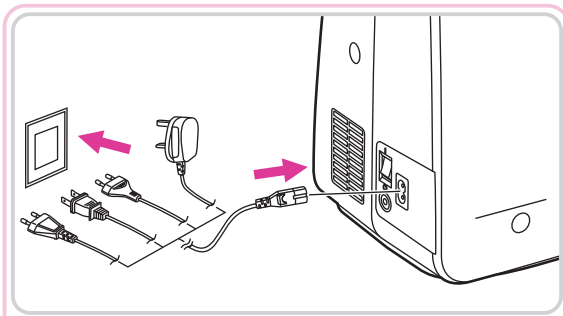
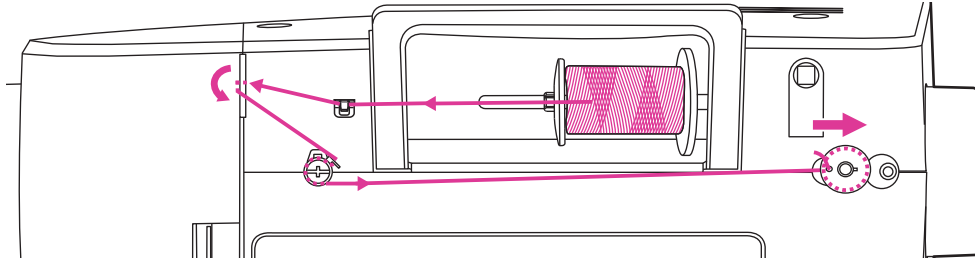
Accessories

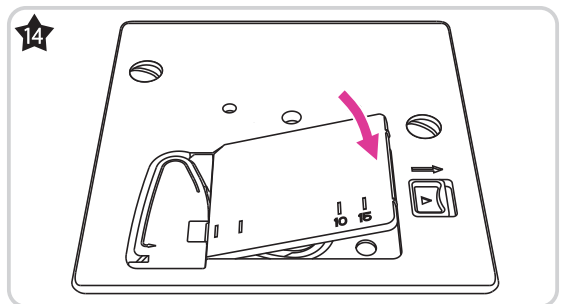
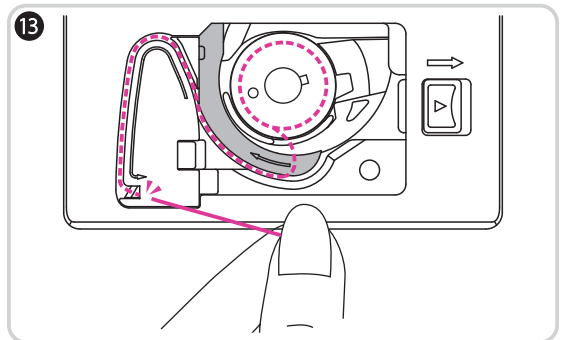
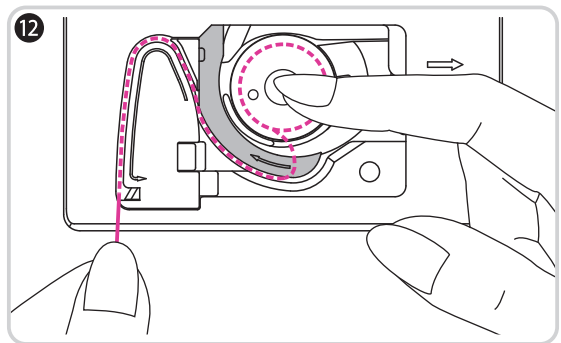
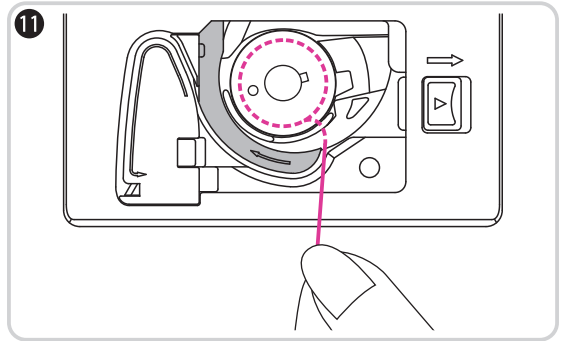
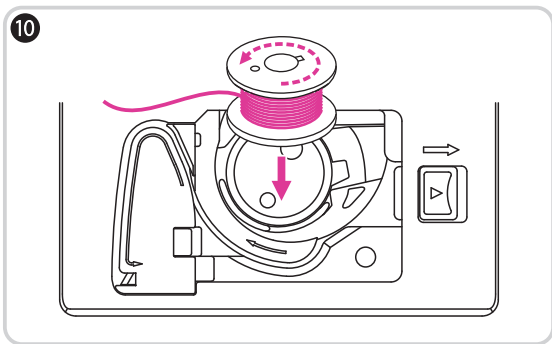
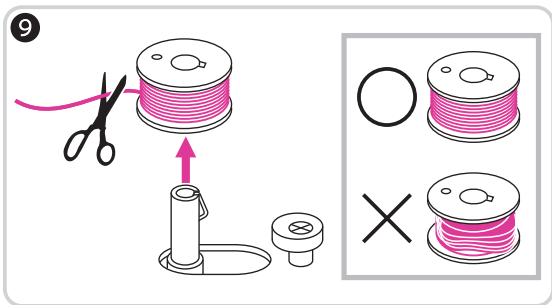
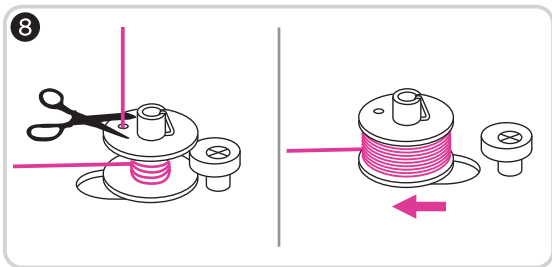
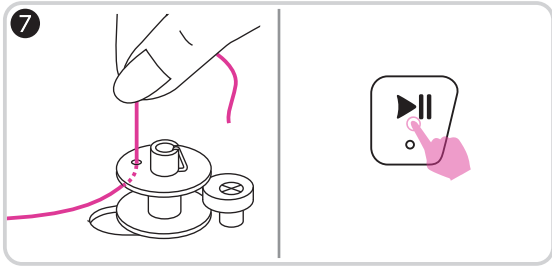
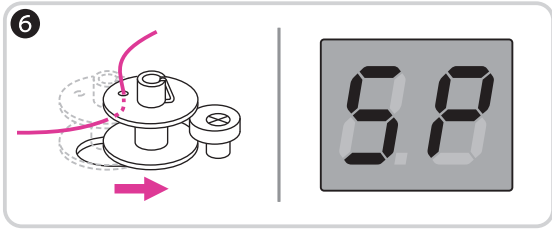


- ① Embroidery foot
- ② Bobbin (3x)
- ③ Spool holder (Large)
- ④ Spool holder (Small)
- ⑤ Spool pin felt
- ⑥ Second spool pin
- ⑦ L-screwdriver
- ⑧ Screwdriver
- ⑨ Seam ripper/brush
- ⑩ Thread net
- ⑪ Pack of needles
- ⑫ Embroidery set (120*180mm)
- ⑬ Embroidery set (50*70mm)

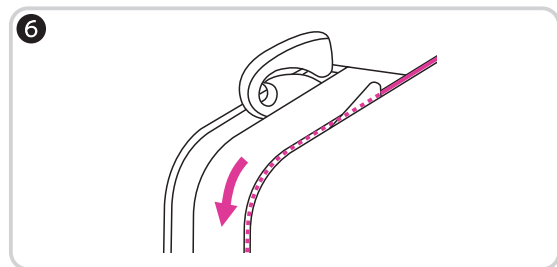
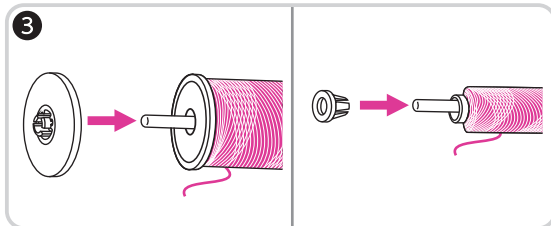
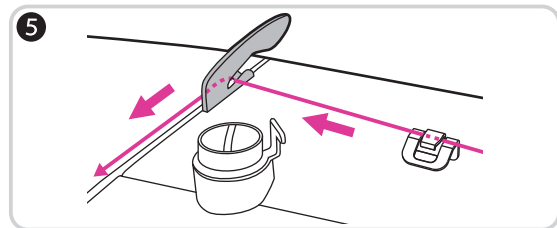
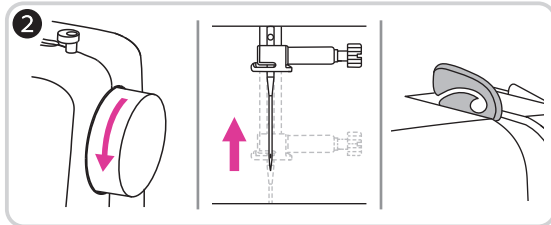
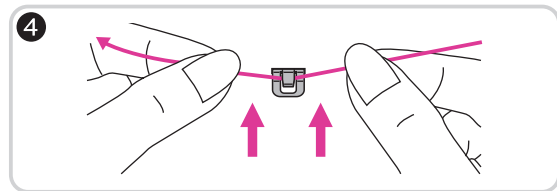
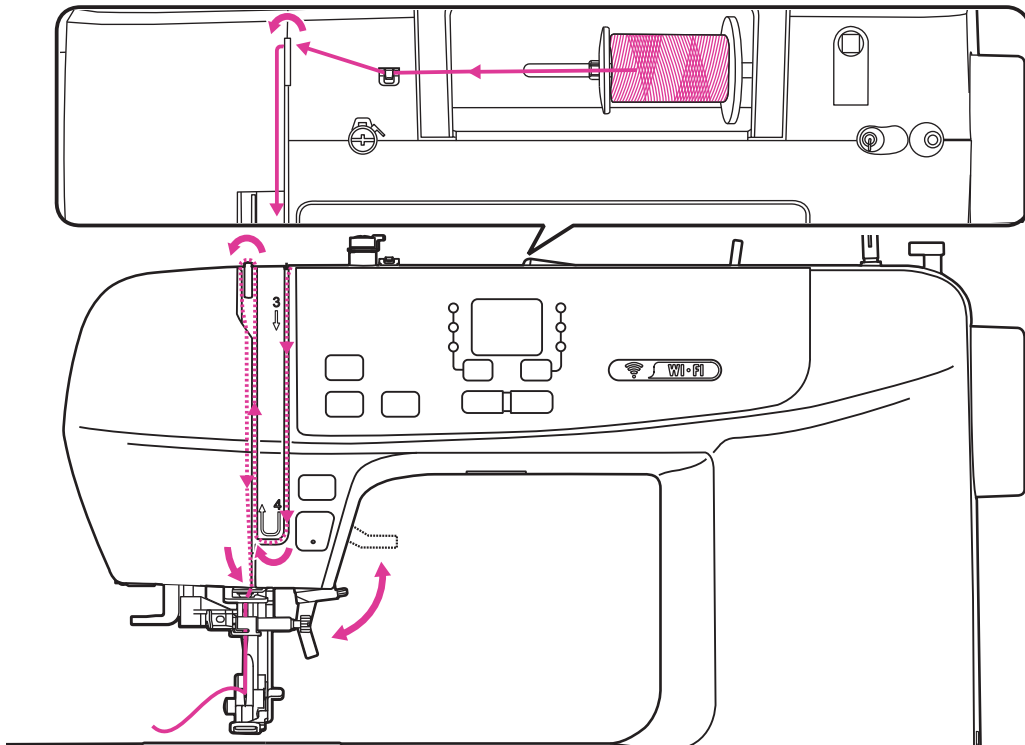
Machine Setup

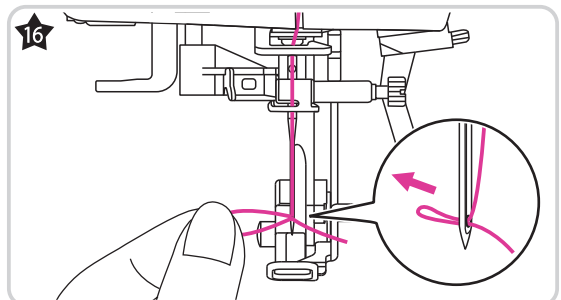
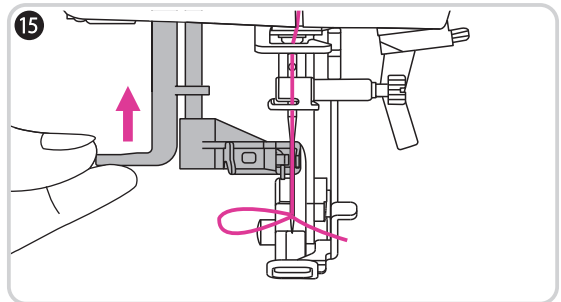
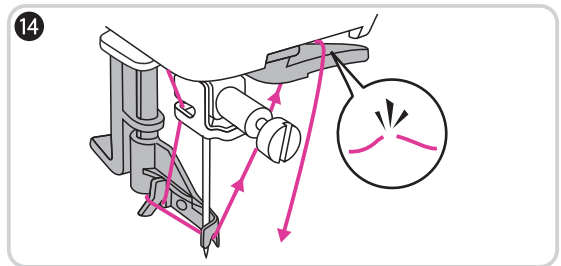
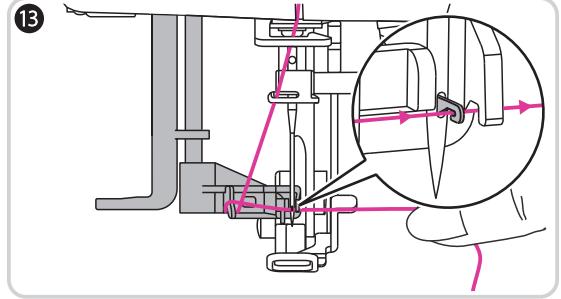
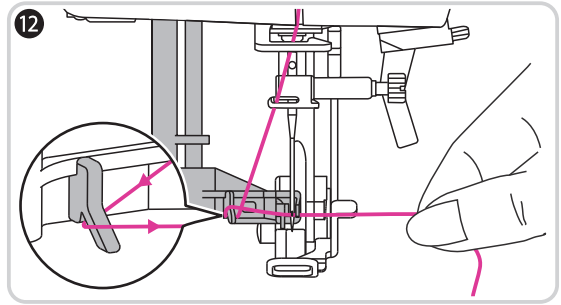
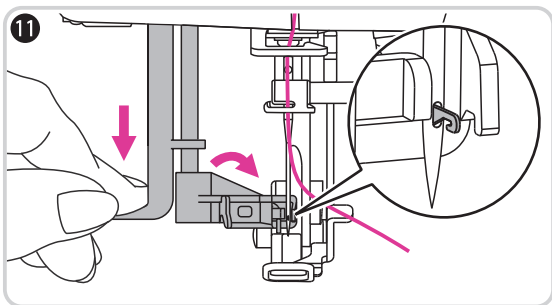
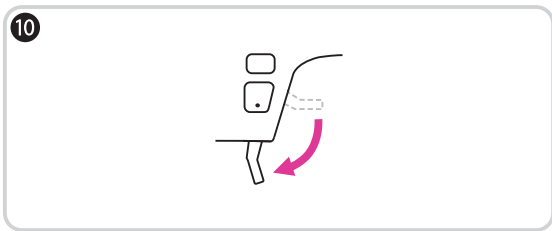
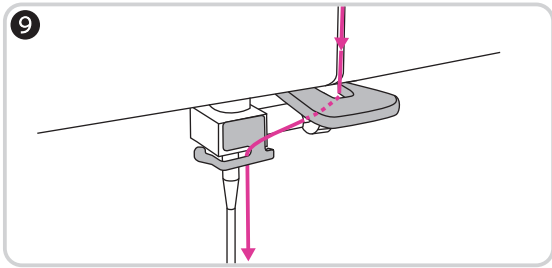
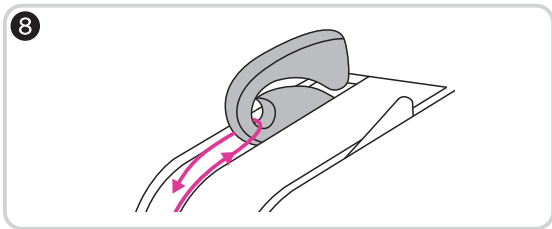
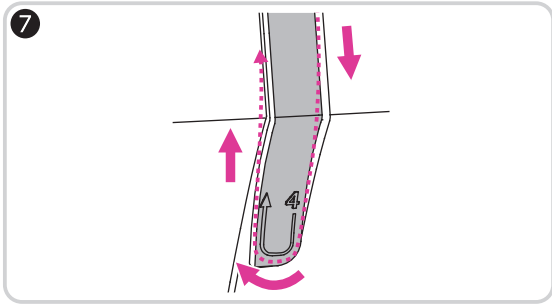
Winding the bobbin





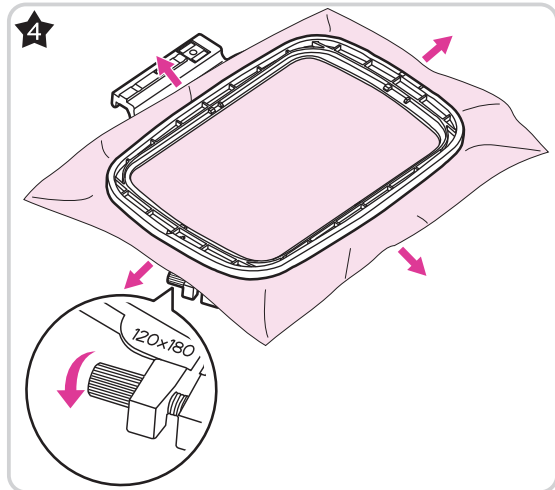
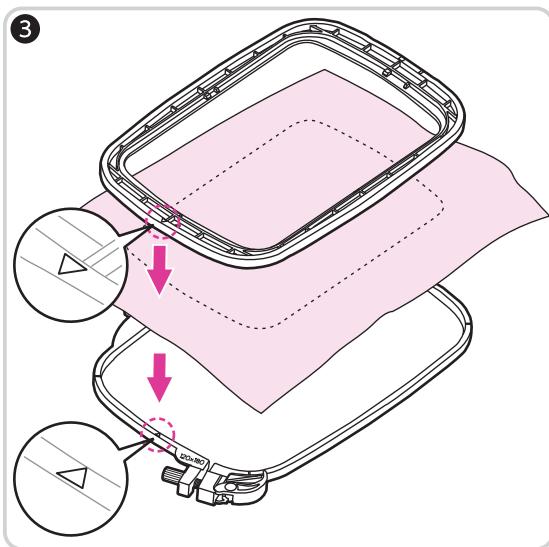
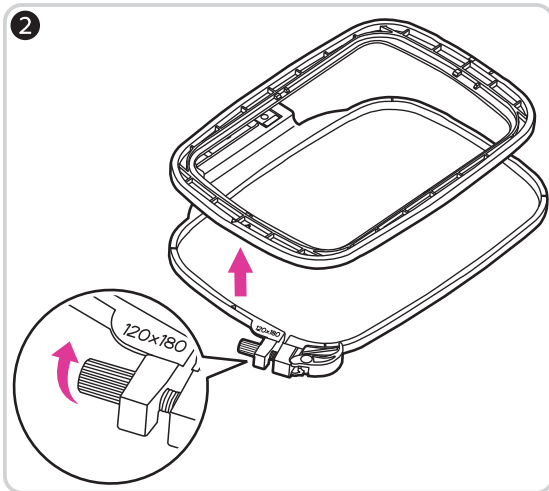
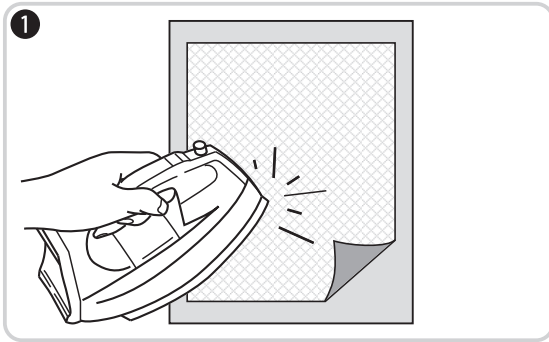
Threading the upper thread



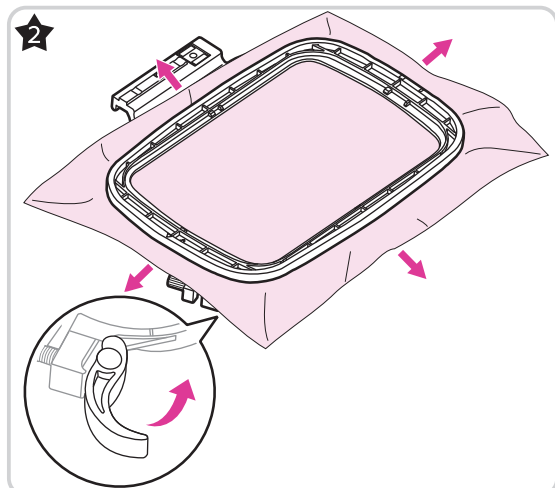
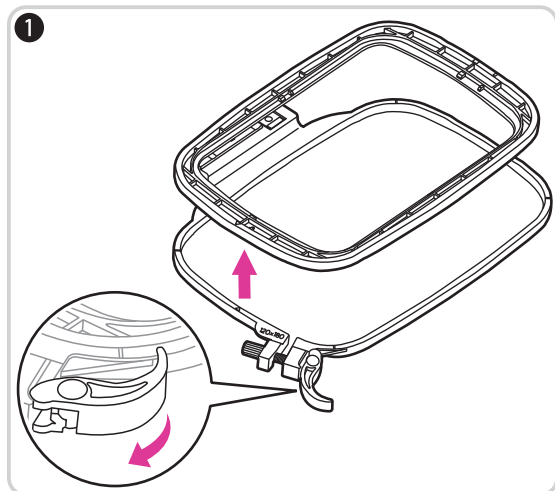


Embroidery Process

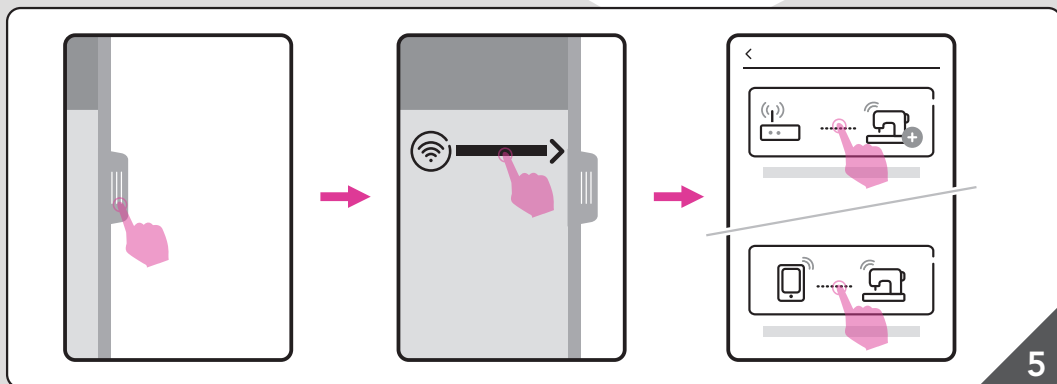
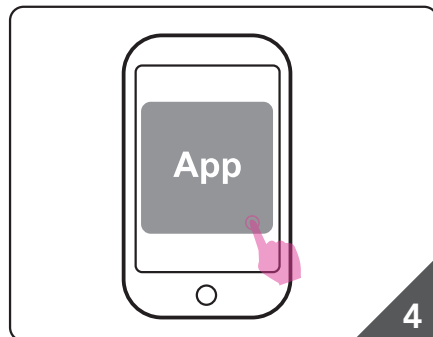
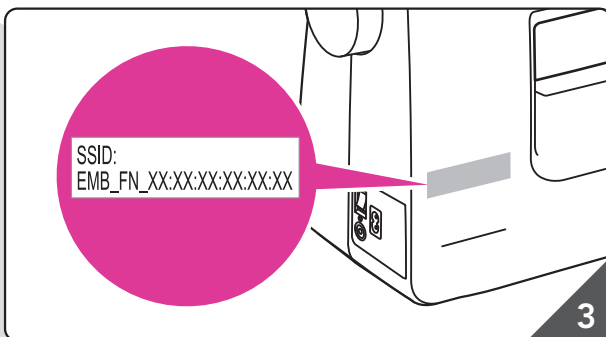
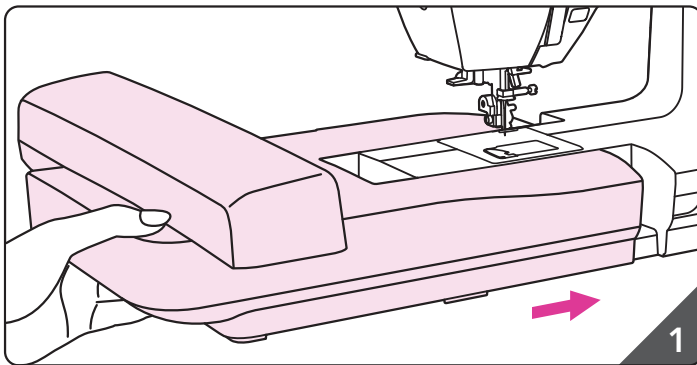
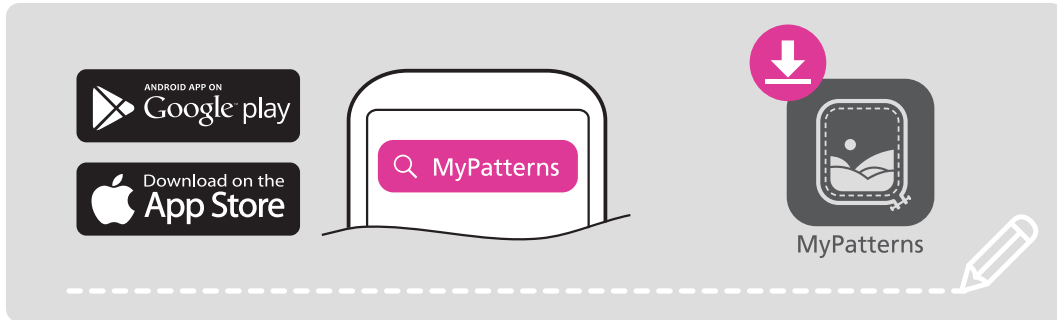
Hooping the fabric

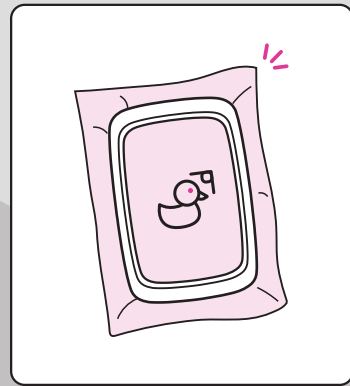
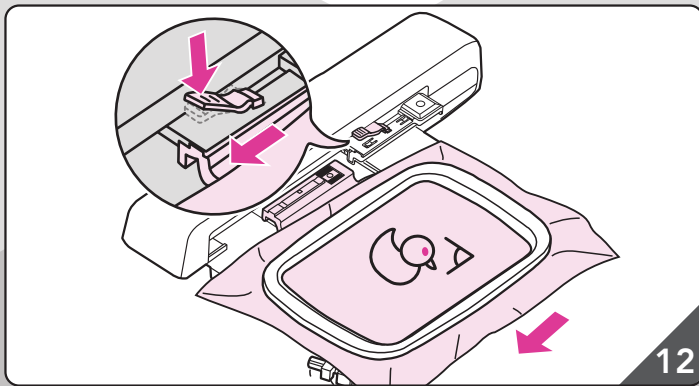
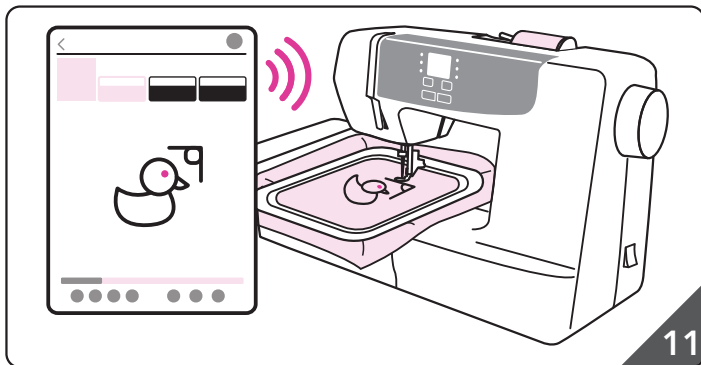
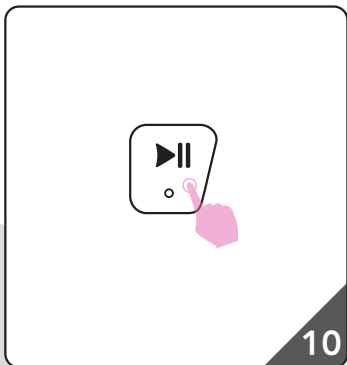
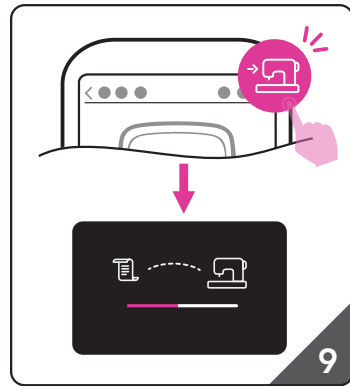
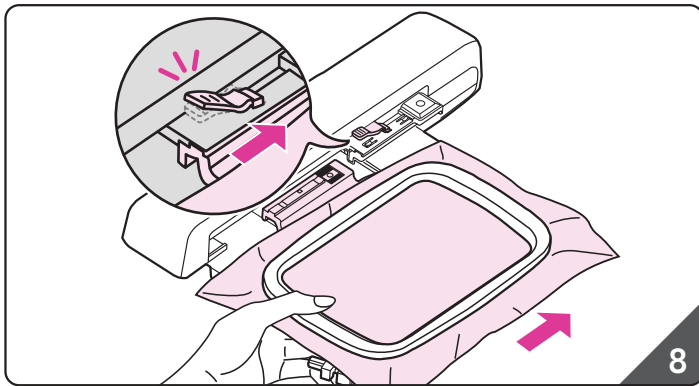
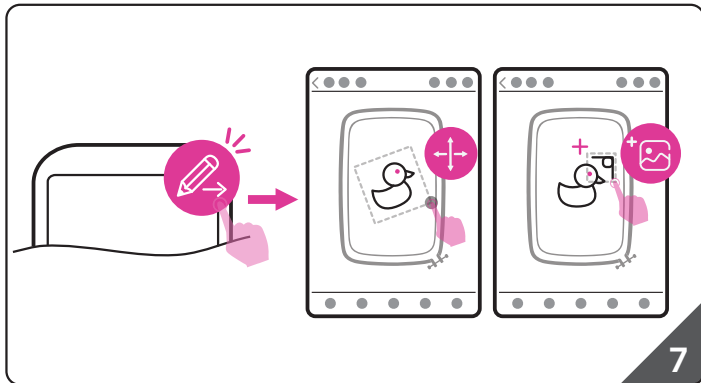
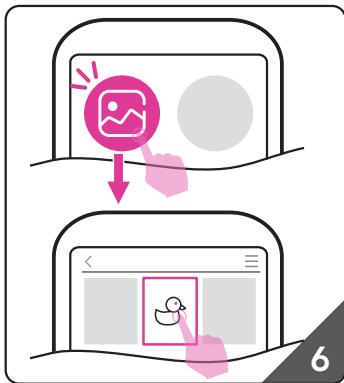


❖ Use the quick release device



Preparation for embroidery





**PLEASE AFFIX YOUR PROOF OF PURCHASE/RECEIPT HERE
IN THE EVENT OF A CLAIM UNDER WARRANTY
THIS RECEIPT MUST BE PRODUCED**

WARRANTY

1. Home of Living Brands (Pty) Ltd (“Home of Living Brands”) warrants to the original purchaser of this product (“the customer”) that this product will be free of defects in quality and workmanship which under normal personal, family or household use and purpose may manifest within a period of 1 (one) year from the date of purchase (“warranty period”).
2. Where the customer has purchased a product and it breaks, is defective or does not work properly for the intended purpose, the customer must notify the supplier from whom the customer bought the product (“the supplier”) thereof within the warranty period. Any claim in terms of this warranty must be supported by a proof of purchase. If proof of purchase is not available, then repair, and/or service charges may be payable by the customer to the supplier.
3. The faulty product must be taken to the supplier's service centre to exercise the warranty.
4. The supplier will refund, repair, or exchange the product in terms of this warranty subject to legislative requirements. This warranty shall be valid only where the customer has not broken the product himself or used the product for something that it is not supposed to be used for. The warranty does not include and will not be construed to cover products damaged as a result of disaster, misuse, tamper, abuse or any unauthorised modification or repair of the product.
5. This warranty will extend only to the product provided at the date of the purchase and not to any expendables attached or installed by the customer.
6. If the customer requests that the supplier repairs the product and the product breaks or fails to work properly within 3 (three) months of the repair and not as a result of misuse, tampering or modification by or on behalf of the customer, then the supplier may replace the product or pay a refund to the customer.
7. The customer may be responsible for certain costs where products returned are not in the original packaging, or if the packaging is damaged. This will be deducted from any refund paid to the customer.

HOME OF LIVING BRANDS (PTY) LTD (JOHANNESBURG)	
JOHANNESBURG	TEL NO. (011) 490-9600
CAPE TOWN	TEL NO. (021) 552-5161
DURBAN	TEL NO. (031) 792-6000

www.homeoflivingbrands.com



Do not dispose of electrical appliances as unsorted municipal waste, use separate collection facilities.

Contact your local government for information regarding the collection systems available.

If electrical appliances are disposed of in landfills or dumps, hazardous substances can leak into the groundwater and get into the food chain, damaging your health and well-being.

When replacing old appliances with new ones, the retailer is legally obligated to take back your old appliance for disposal at least for free of charge.