



Instruction Manual

EMSM12 Origin Sewing Machine

Before using the machine for the first time, read through these operating instructions carefully and follow the safety advice. This product may only be used as directed in the operating instructions and for the intended purposes. Please keep these instructions in a safe place for future reference.

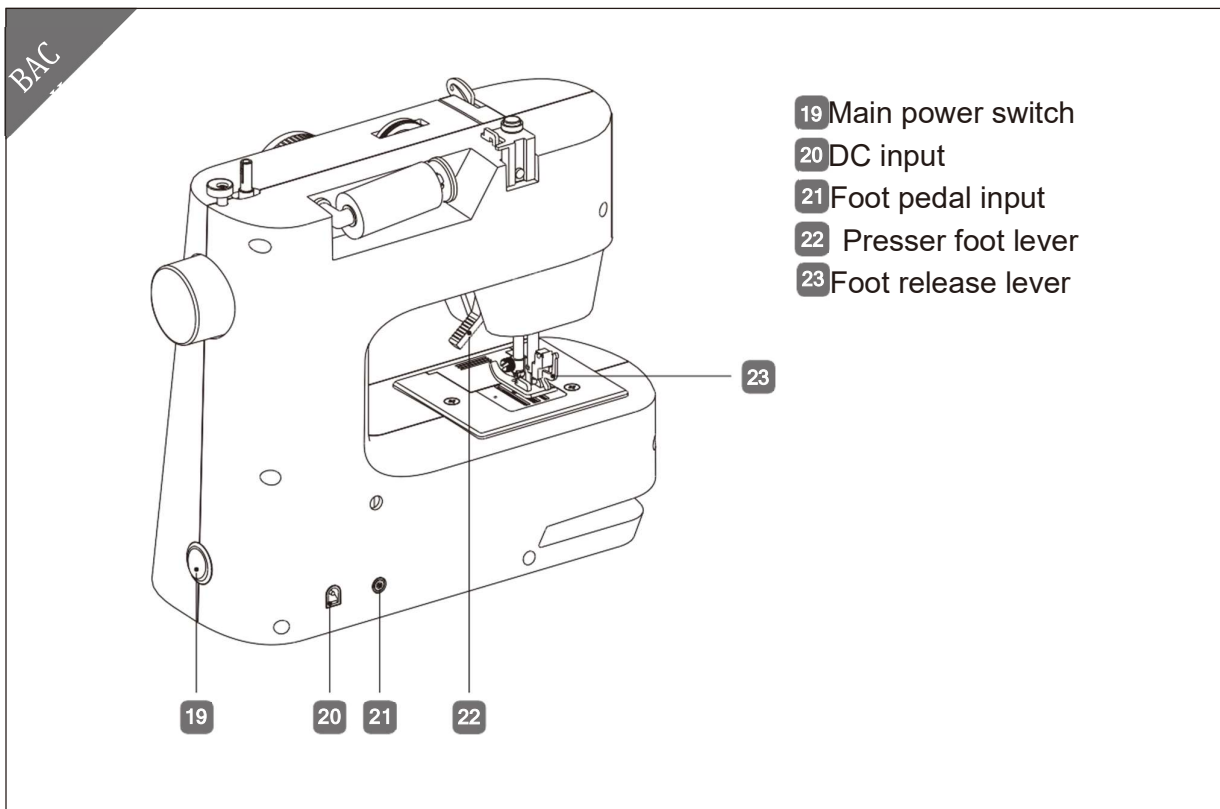
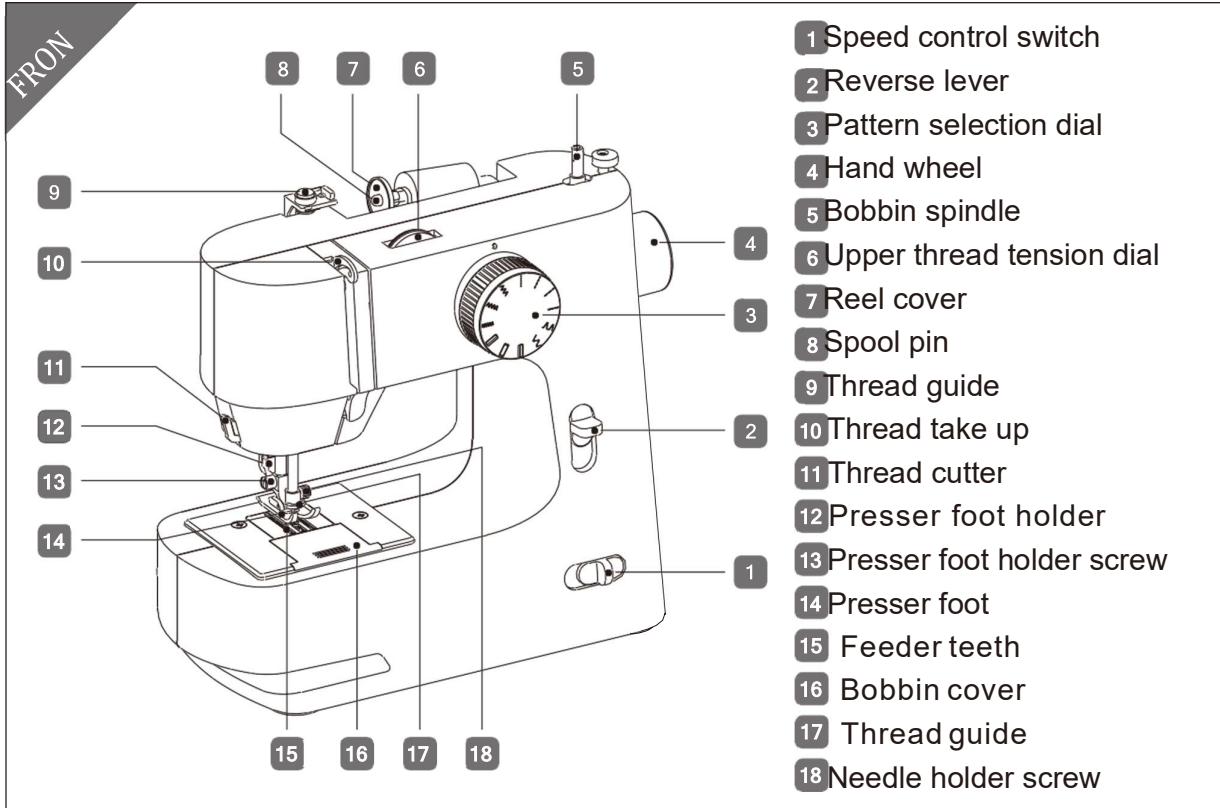


Contents

Contents.....	1
Device parts.....	2
Package contents.....	3
Safety information	4
About Instruction manual.....	5
Proper use.....	6
Electrical connection	7
Selection of stitches pattern	8
Sewing function.....	9
Bobbing winding.....	10
Replacing the bobbin.....	11
Threading the sewing machine.....	12
Bring up the lower thread	15
Adjusting the upper thread tension.....	16
Sewing	17
Removing and fitting the presser foot	18
Buttonhole	20
Replacing needle	21
Faults and solutions.....	22



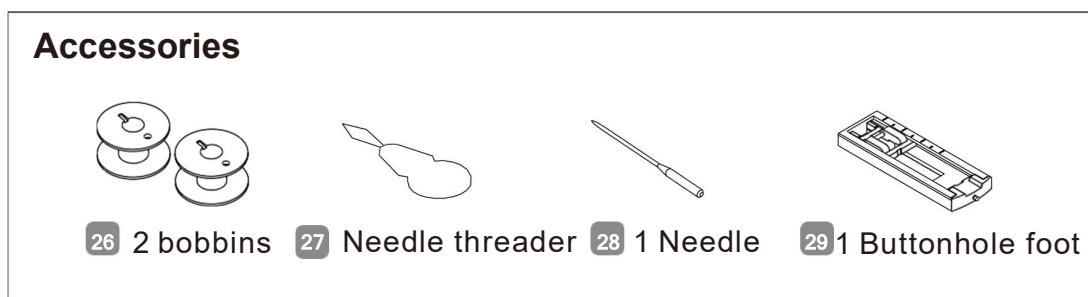
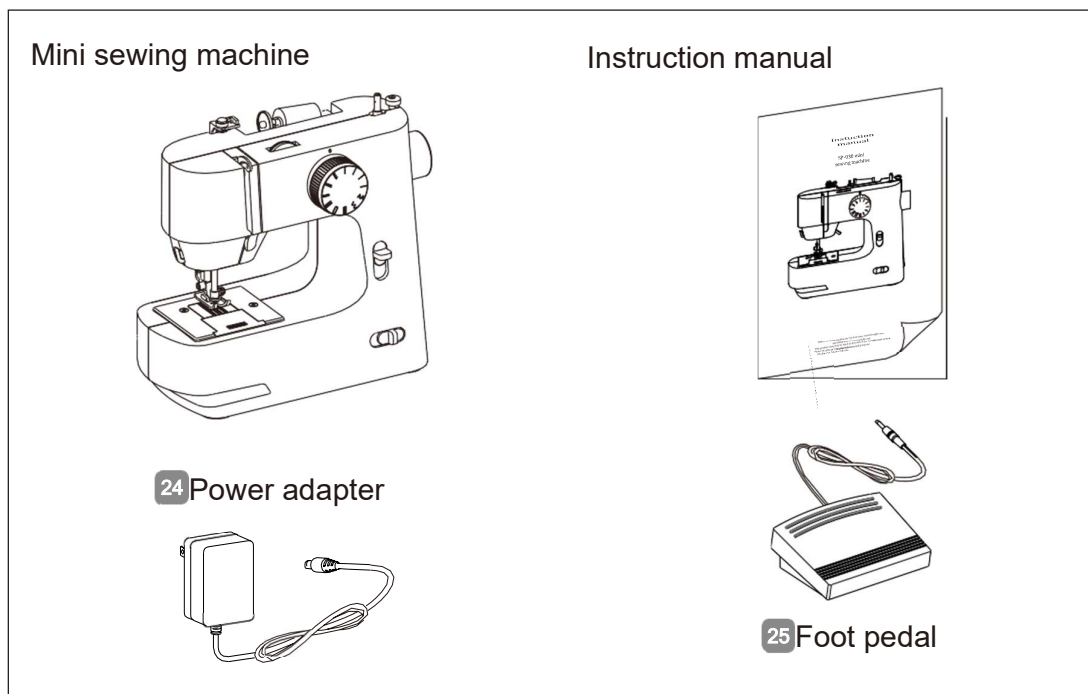
Device parts



Package contents



Please check your purchase to ensure that all items are included. If anything is missing, please contact the distributor within 14 days of purchase.



Packaging film can be swallowed or used improperly. Therefore, there is a risk of suffocation!

Keep packaging material such as plastic film or plastic bags away from children.

Safety information



While sewing, please follow the basic safety precaution as below,



Danger—to reduce the risk of electric shock.

1. When you leave the sewing machine unattended, unplug it to prevent accidents. Unplug the sewing machine before any cleaning or finishing your work.
2. Switch off the machine before power parts maintenance work.



Warning—to reduce the risk of burns, fires, electric shocks, or personal injuries.

1. Do not play sewing machine as a toy. Children should be kept away from the appliance and the mains cable.
2. Please use this sewing machine follow the instruction manual, do not use any accessories other than those supplied.
3. If the machine or mains cable is damaged, or machine does not run, or fallen into the water, do not use the machine anymore, please contact the service center or another suitably qualified specialist workshop to check and repair.
4. Do not drop anything into the gap of the sewing machine, also do not plunge anything into the gap of the sewing machine.
5. Do not use the sewing machine outdoors.
6. Do not use the sewing machine in spray or oxygen storage area.
7. When you want to disconnect the power supply of the sewing machine, please turn the main power switch to “O” (O means off), and then unplug the machine.
8. When you unplug the machine, always take hold of the plug itself, not the cable.
9. Be careful when using the moving parts of the machine, especially the needle.
10. Do not use damaged needle plate, or it will cause needle break.
11. Do not use bent needles.
12. When sewing, do not hold the fabric tight or pull the fabric. The needles could bend or break.
13. Switch off and unplug the sewing machine before threading the needle, changing the needle, setting the presser foot.
14. In the absence of guardianship, never let children or disabled people use sewing machine
15. Keep sewing machine out of reach of children.

About instruction manual



About Instruction manual



Before using the machine for the first time, read through these operating instructions carefully and follow the safety advice!

This product may only be used as directed in the operating instructions and for the intended purposes.

Please keep these instructions in a safe place for future reference.

If you pass on the machine to another party, it is essential that you also provide the operating instructions!

Explanation of symbols



This signal word indicates a hazard with a medium level of risk which, if not avoided, could result in death or serious injury.



This signal word indicates a hazard with a low level of risk which, if not avoided, could result in minor or moderate injury.



This symbol gives you useful additional information on assembly or operation.



Declaration of conformity (see section 'Declaration of conformity'):
Products that feature this symbol meet the requirements of the EC directives.



TIP
Sewing tips to make your work easier.

	<p>Protection class II Electrical appliances in protection class II are electrical appliances that permanently have double and/or reinforced insulation and do not have any connection options for a protective earth. The housing of an electrical appliance in protection class II that is enclosed in insulated material can partially or fully act as the additional or reinforced insulation.</p>
	<p>Indoor use Devices with this symbol are only suitable for use indoors.</p>



Electrical connection



注意CAUTION

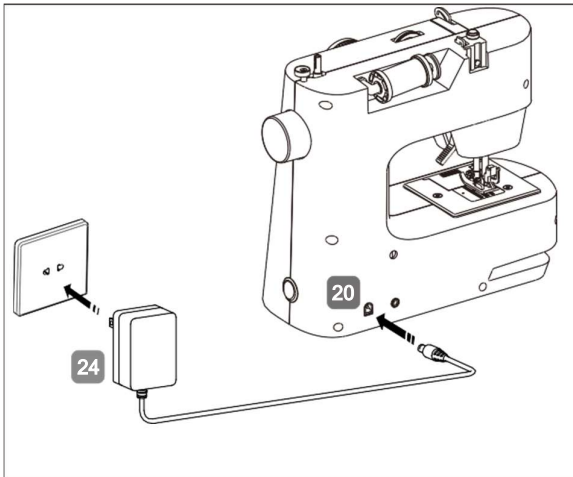
Risk of injury!

There is a risk of injury from accidental operation of the foot control. Once you have finished working or before you start maintenance, always turn off and unplug the machine.

Electrical connection

1. Use AC power supply

Connect the DC input socket **20** on the back of the sewing machine, and then connect the adapter **24** to the main power supply.

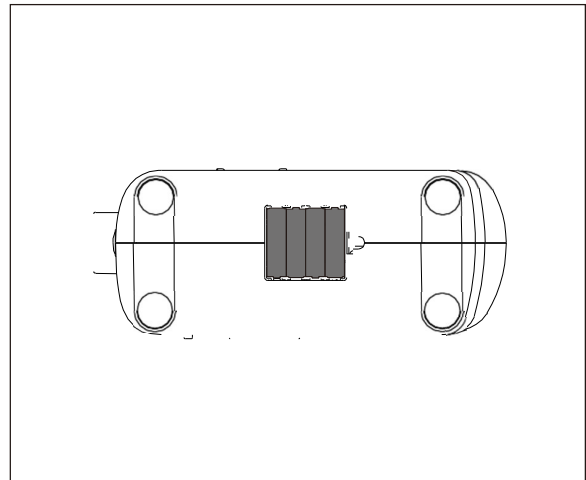


注意CAUTION

1. Make sure that the power switch is in the OFF position and the speed control switch is in the STOP position, when inserting or changing the batteries.
2. The sewing machine can use either. batteries or the adapter. It's not necessary to use both at once. Otherwise, the machine will be hardly damaged. Make sure remove the batteries before using the power adapter.
3. The machine can't work if the batteries are not installed in a right way. Please follow the instruction.

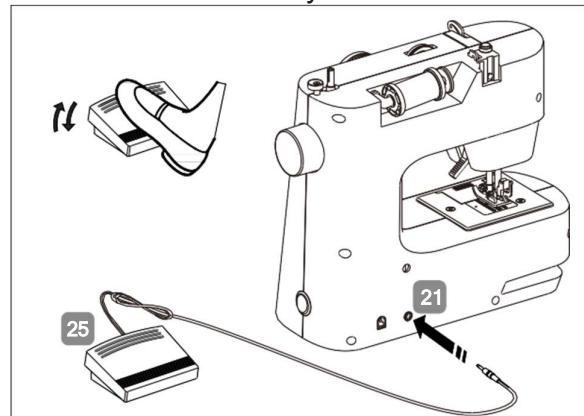
2. Use batteries.

Turn the sewing machine on its side on a flat surface and remove the battery cover. Insert 4 AA batteries into the compartment and put the battery cover back on.



Foot pedal connection

Connect the foot pedal **25** to the sewing machine by inserting the jack into the foot pedal input socket **21** in the back of the sewing machine. And place the pedal to the ground to control the machine conveniently.



Proper use



Proper use

Your appliance offers several options for usage:

The sewing machine can be used to join and finish seams on lightweight to heavy material.



Maximum thickness of cloth sewed by this model is 5 layers of 12oz jean. Over this thickness may cause damage of the sewing machine.

- The machine can handle textiles, composite fabrics, and thin leather.
- The product is intended for private use only and not for industrial/commercial use.

Please note that we shall not be liable in cases of improper use:

- Do not modify the product without our consent and do not use any additional equipment which we have not approved or supplied.
- Use only spare parts and accessories that we have supplied or approved.
- Heed all the information in these operating instructions, especially the safety information. Any other use is deemed improper and can cause personal injury or property damage.
- Do not use the machine in extreme environmental conditions.

Declaration of conformity

We hereby declare that the product conforms to the following European requirements:

- EMC Directive 2014/30/EU
- Low Voltage Directive 2014/35/EU
- Eco-design Directive 2009/125/EC
- RoHS Directive 2011/65/EU



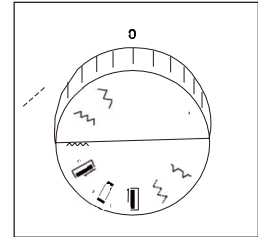
Selection of stitch pattern



1. Stitch pattern selection function

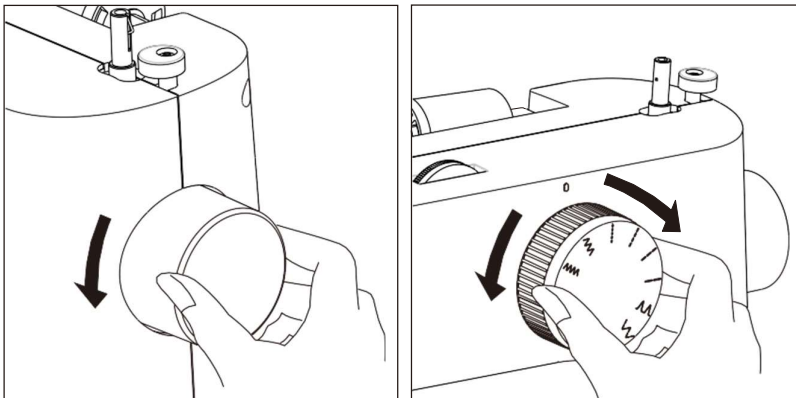
This machine has 12 kinds of stitch patterns, you can use the pattern selection dial to select the stitch you want.

Rotating the dial, make sure the pattern you want it lined up with the mark.



Before changing the stitch, always make sure that the needle is at its highest position by turning the hand wheel **4** towards you. And then turn the pattern selection dial **3** to select the pattern you want. Do not turn the pattern selection dial while sewing.

When the needle in the fabric, never turn the pattern selection dial, otherwise, the needle may bend or break, the machine will be damaged, there is even a risk of personal injury.



Stitch patterns

Stitch					~				~	~	~	
Model	Straight stitch				Blind stitch		Buttonhole			Zigzag stitch		
Presser foot	Standard foot					Buttonhole presser foot			Standard foot			
Purpose	Shorter stitch		Longer stitch		Blind hemming		Buttonhole			Hemming Applique		



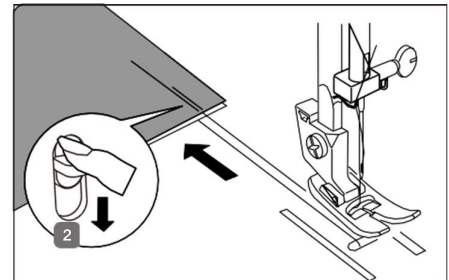
Reverse stitching/Cutting thread/Free arm

2. Reverse stitching



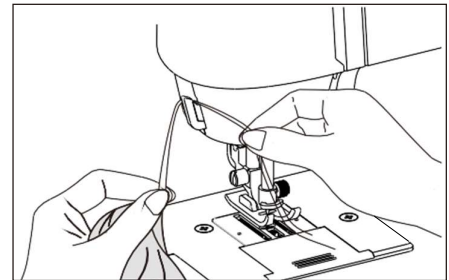
Reverse stitching can be only used in straight stitch

Sew forward as usual, and then press and hold down the reverse stitch lever **2** to sew backward. The length of the reverse stitch depends on the pressure on the lever, when pressing to the bottom, the length of the stitch is maximum.



3. Cutting thread

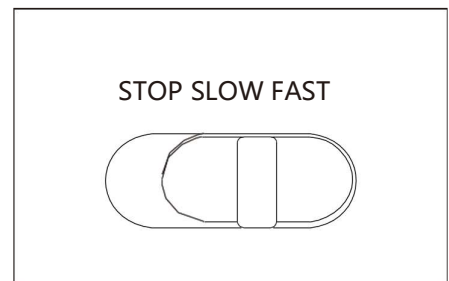
Cut the thread with the thread cutter **11** at the lamp cover of the sewing machine. Pull and tighten the thread to the cutter, it will be easy for cutting the thread.



Leave around 15cm of the thread hanging from the eye of the needle, it will be helpful for next work.

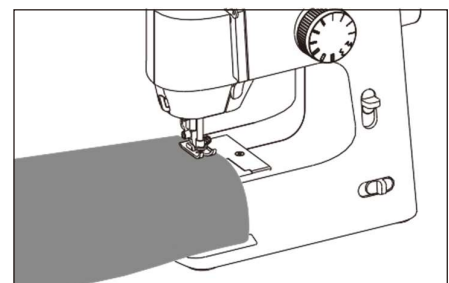
4. Controlling the sewing speed

Slide the speed control switch **1** to the SLOW or FAST, the machine will work slower or faster. This switch also can control the START and STOP of the sewing machine.



5. Sewing with free arm

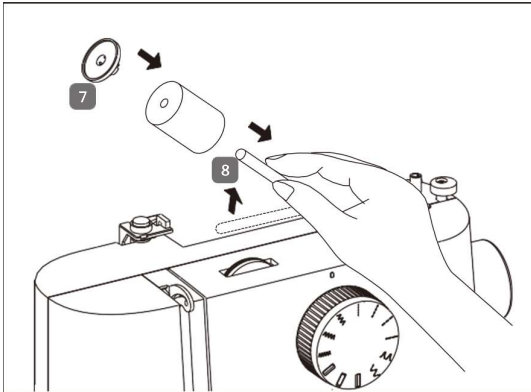
The free arm enables you to sew tube-shaped piece more easily.



Bobbin winding



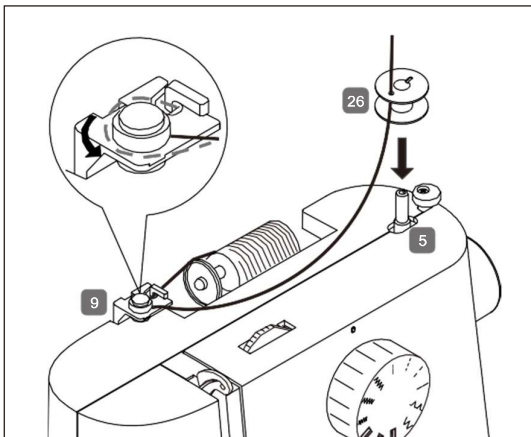
You can use the sewing machine to wind thread onto the bobbins **26** easily.



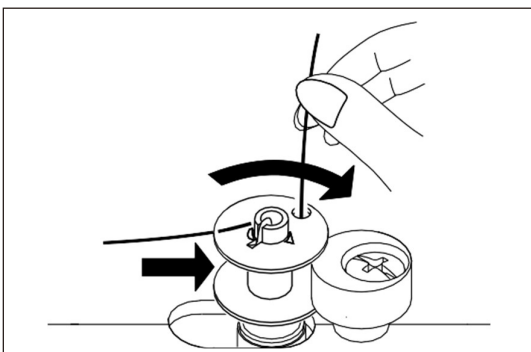
1. Raise the spool pin **8**, place reel and the reel cover **7** on it.



The spool pin **8** can be adjusted up and down to match the different thread reel to keep the sewing smoothly.



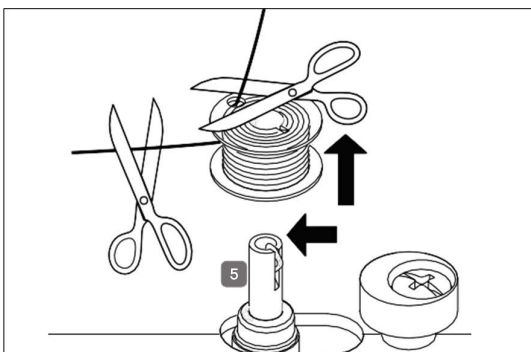
2. Route the thread from the reel around the bobbin winder thread guide **9**, feed the end of the thread through the hole in the bobbin, as illustrated, and wind the thread around the bobbin a few times by hand. Place the bobbin on the spindle **5**.



3. Move the bobbins spindle **5** to the right towards the winding stop until you hear it click into the place. Hold on to the end of the thread and press the foot pedal or turn the speed control switch **1** to the right side to start winding.



The spindle will stop automatically once the spool with enough thread.



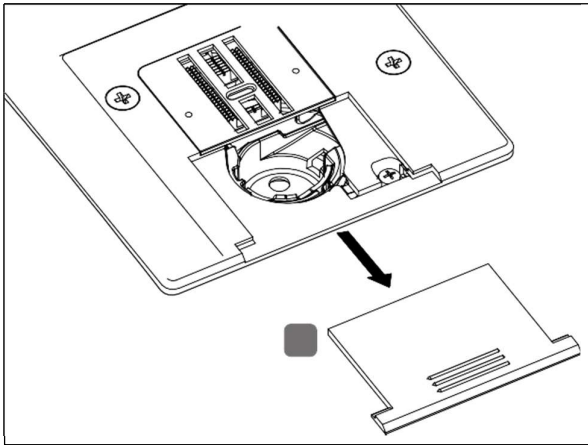
4. Move the bobbin spindle **5** to the left and remove the bobbin, cut the end of the thread



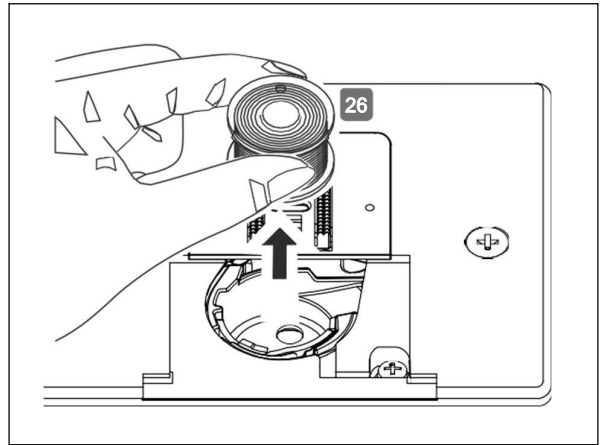
Replacing the bobbin

Remove the bobbin.

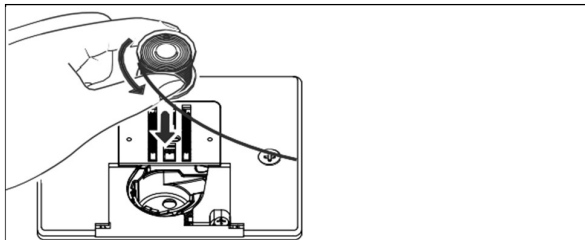
1. Turn the hand wheel **4** toward you until the needle is in its highest position. Raise the presser foot lever **22**. Slide the bobbin cover **16** forward.



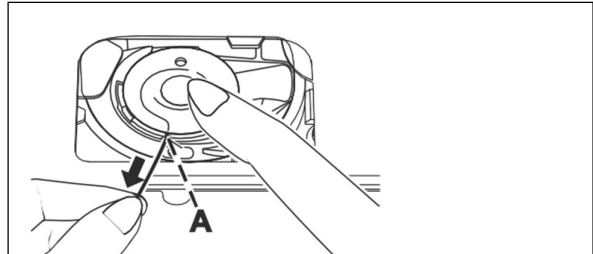
2. Take out the bobbin **26** from the bobbin holder.



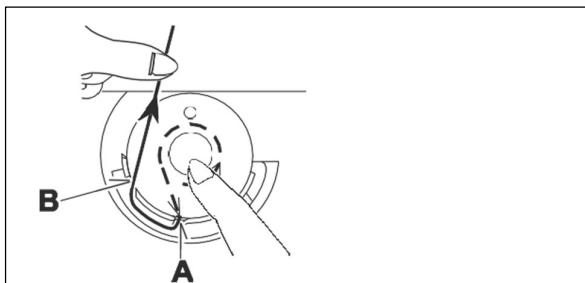
Insert the bobbin



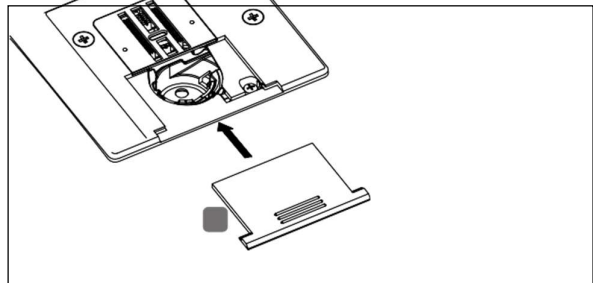
1. Hold the bobbin between the thumb and index finger and leave about 15cm of the thread hanging out. Then put the bobbin into the bobbin holder, pull the thread, it can be turned anti-clockwise.



2. As shown, pass the thread from right side to left side through the tension spring. (Slot A)



3. As shown, pull out the thread from slot B, make sure that around 15cm of the thread is hanging out.



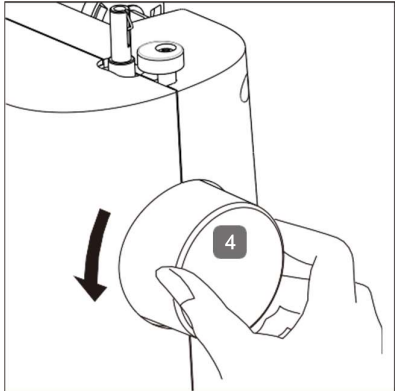
4. Replace the bobbin cover plate **16**.

Threading the sewing machine

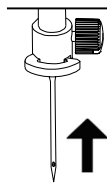


Threading upper thread

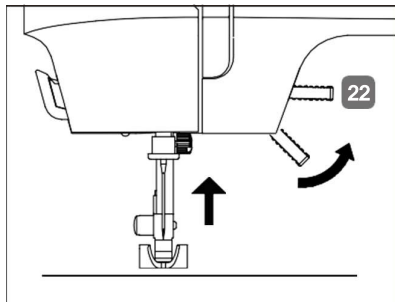
i Please read the following instructions carefully as an incorrect sequence or thread guiding can lead to broken threads, missed stitches, and gathered fabric.



1. Before threading the needle, raise the needle to its highest position by turning the hand wheel **4**.



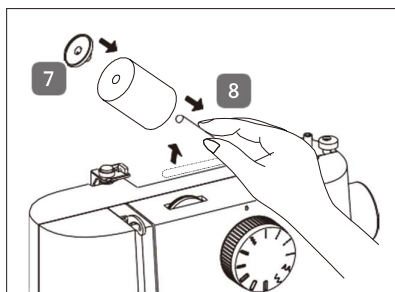
i It is better to develop a habit of turning the hand wheel toward you (as shown), especially when the upper thread is already threaded. Otherwise, the machine will be knotted by the thread in the hook.



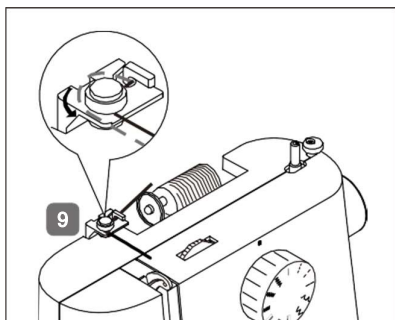
2. Raise the presser foot lever **22** to the upper position.



When the presser foot is lifted, the tension discs on the upper thread tension regulator are opened, the thread will run through the tension discs from the bottom, the upper thread will sew with tension like this.



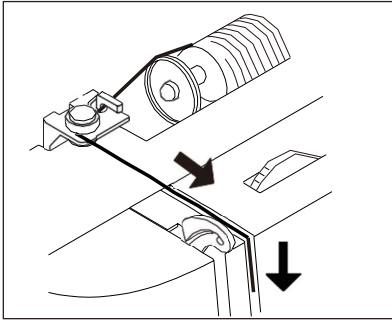
3. Put the reel and reel cover **7** into the spool pin **8**.



4. Feed the thread through the thread guide **9** from the reel.



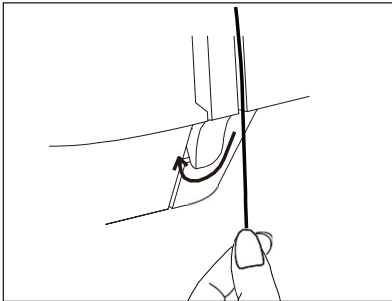
Threading the sewing machine



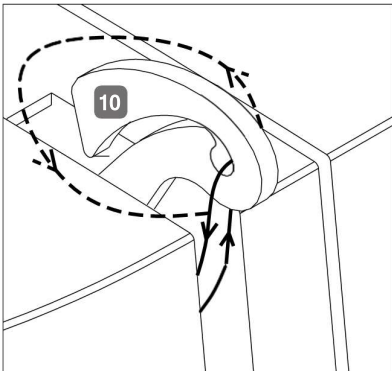
5. As shown, pull the thread down into the tension regulator.



Unlike the tension discs on most sewing machines, the tension discs on the upper thread tension regulator are not visible, so checking very carefully that the thread is between the tension discs.



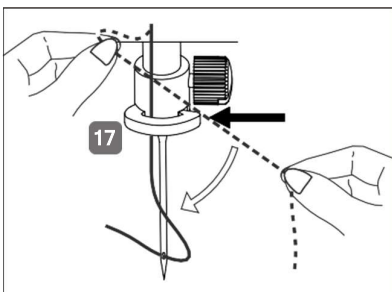
6. Then pass the thread between the tension discs of the upper thread tension regulator.



7. Then insert the thread from right to the left in the hook of the thread take-up **10**.



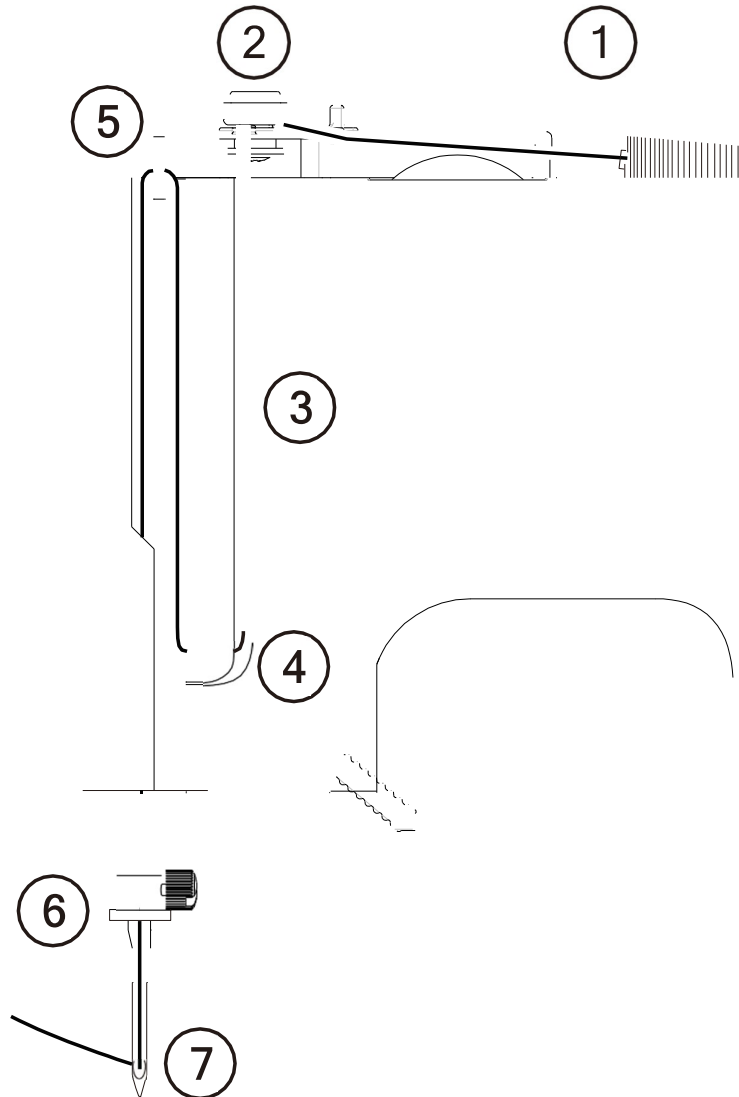
Turn the hand wheel, if necessary, to raise the thread take-up.



8. As shown, pass the thread through the thread guide **17** on the needle holder. Finally take the thread through the eye of the needle.

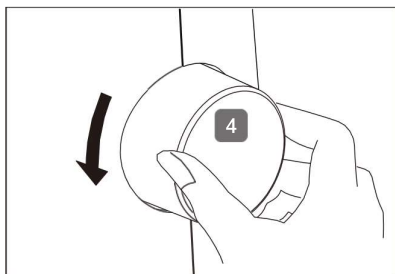
Diagram of the upper thread guide

The diagram summarizes the route of the upper thread. The numbers indicate the sequence of the steps in the threading process.

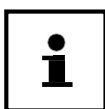
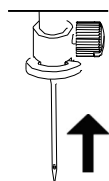




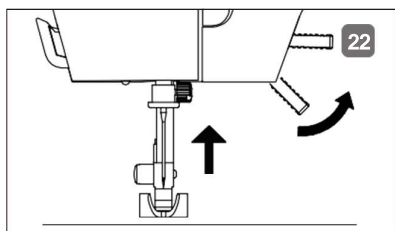
Bringing up the lower thread



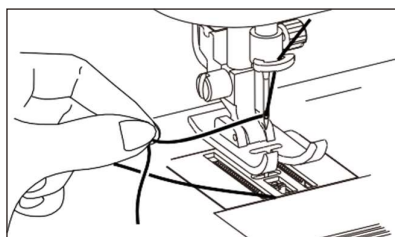
1. As shown, turn the hand wheel **4** towards you with your right hand until the needle is in the uppermost position.



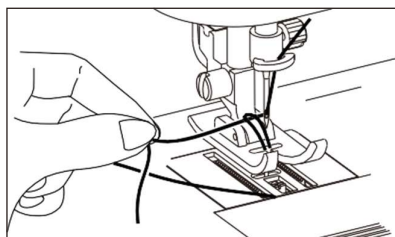
It's better to develop a habit of turning the hand wheel toward you (as shown), especially when the upper thread is already threaded. Otherwise, the machine will be knotted by the thread in the hook.



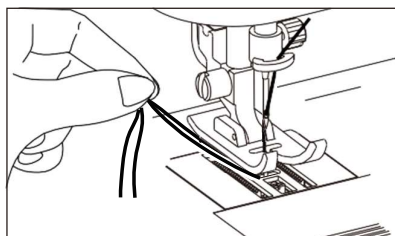
2. As shown, raise the presser foot lever **22**.



3. Hold the upper thread loosely in your left hand and turn the hand wheel towards you with your right hand until the needle has moved down and backup again.



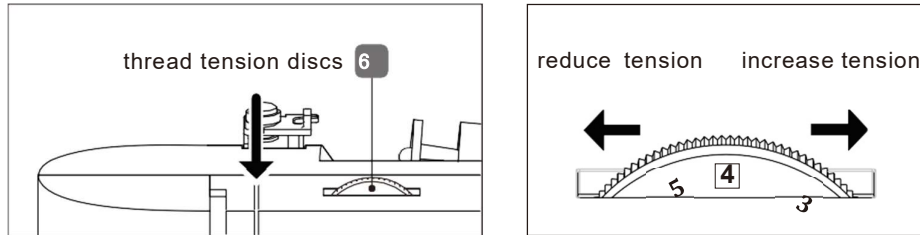
4. Pull the upper thread upwards slightly so that the lower thread forms a loop.



5. Pull a length of about 15cm of both threads towards the back under the presser foot.

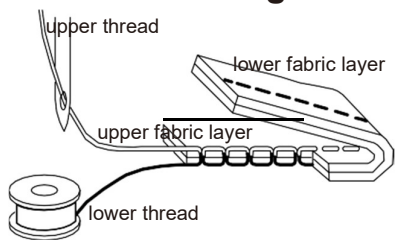
Adjusting the upper thread tension

i The tension is created by the discs through which the thread is guided. The pressure on these discs is controlled by the upper thread tension regulator. The higher the number, the higher the tension.



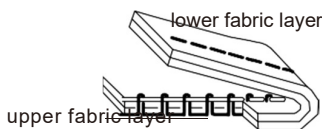
i An upper thread tension of 3-4 is ideal for most sewing work. The upper thread tension is not activated until the presser foot is lowered. There are several reasons why you might need to adjust the tension. For example, different tensions are required for different fabrics. The tension you require depends on the strength and thickness of the fabric, the number of layers of fabric you want to sew and the type of stitch you choose. Please make sure that the tension of the upper and lower threads match, as otherwise the fabric may gather. We recommend that you carry out a test on a scrap of fabric before starting work.

Correct stitching

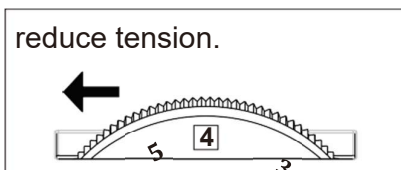


As shown, the tension of the upper and lower thread should be sufficient to ensure that the threads interlace in the middle of the fabric. The fabric remains smooth and does not pucker.

Incorrect types of stitching



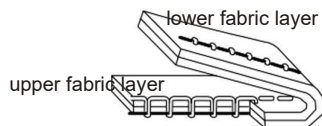
Upper thread is too tight and pulls the lower thread up. The lower thread is visible on the upper fabric layer.



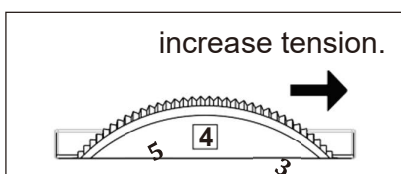
Solution:

Reduce the upper thread tension by turning the upper thread tension regulator to a lower number.

Incorrect types of stitching



Upper thread is too loose. The lower thread pulls the upper thread down. The upper thread is visible on the underside of the fabric layer.



Solution:

Increase the upper thread tension by turning the upper thread tension regulator to

a lower number.



Sewing



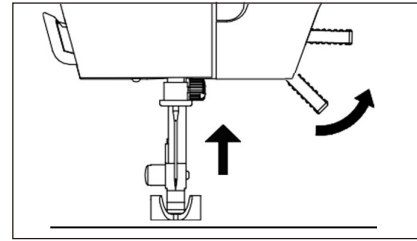
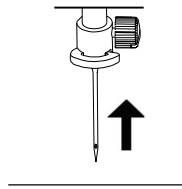
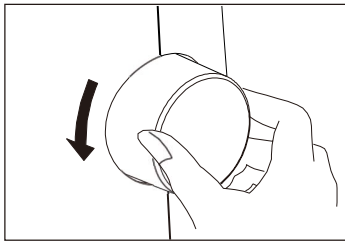
TIP

If you are not sure whether the thread tension or stitch type, for example, is correct, test the settings on a swatch.

The fabric will run through automatically under the presser foot. It should not be held fast or pulled by hand but should only be gently guided so that the stitches go in the desired direction.

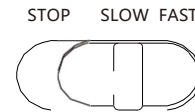
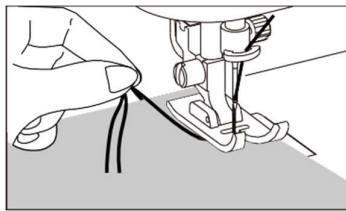


It's better to develop a habit of turning the hand wheel toward you (as shown), especially when the upper thread is already threaded. Otherwise, the machine will be knotted by the thread in the hook.



Switch on the main switch **19**.

When changing the stitch type, always move the needle to its highest position by turning the hand wheel **4** toward you. Raise the presser foot lever.



Push the fabric sufficiently far under the presser foot. Make **6** sure there is a length of around 10cm of the upper and lower thread behind the needle.

Lower the presser foot lever **22**. Holding the thread with your left hand, turn the hand wheel **4** towards you and lower the needle to the point on the fabric where you want to start sewing.

Press the foot pedal **25** or slide the speed switch **1** to right to start sewing. While sewing, guide the fabric gently by hand.

Sew a few reverse stitches by actuating the reverser lever **2** to fix the first stitches in place.



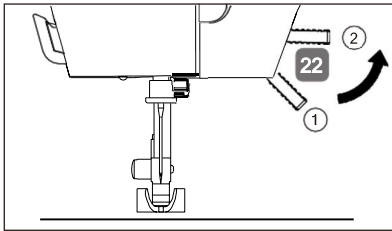
Selecting the right needle

Risk of damage!

Using a defective needle can cause damage to the material.
– Replace defective needles immediately.

The number indicating the needle thickness is written on the shaft. The higher the number, the thicker the needle.

Removing and fitting the presser foot



Raising and lowering the presser foot

Raise or lower the presser foot lever **22** to move the presser foot up or down.

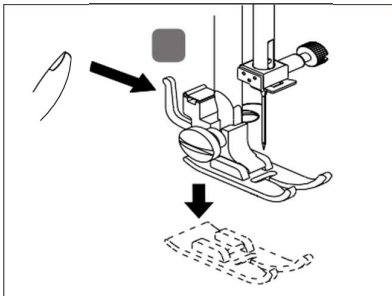
Position 1: The presser foot presses the fabric onto the feeders and the thread tension are activated. You can start sewing.

Position 2: The presser foot is in the top position and the thread tension is deactivated. You can take the fabric out of the machine, put it in the machine, or change the presser foot.

Removing and fitting the presser foot

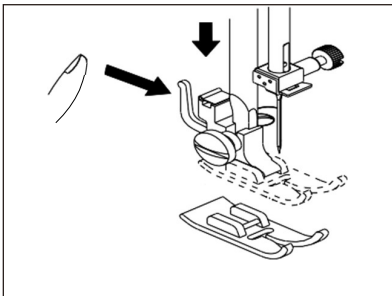
Removal

- Turn the hand wheel towards you until the needle has reached its highest position.
- Lift the presser foot by raising the presser foot lever to the highest position.
- The presser foot will drop out if you push the foot release lever **23** behind the presser foot holder.



Fitting

- Fit the presser foot so that the pin on the foot is directly under the groove of the footholder.
- Lower the presser foot lever as shown, push the sewing foot release lever upwards, the sewing foot will click into place.





Replacing the needle

Replacing the needle

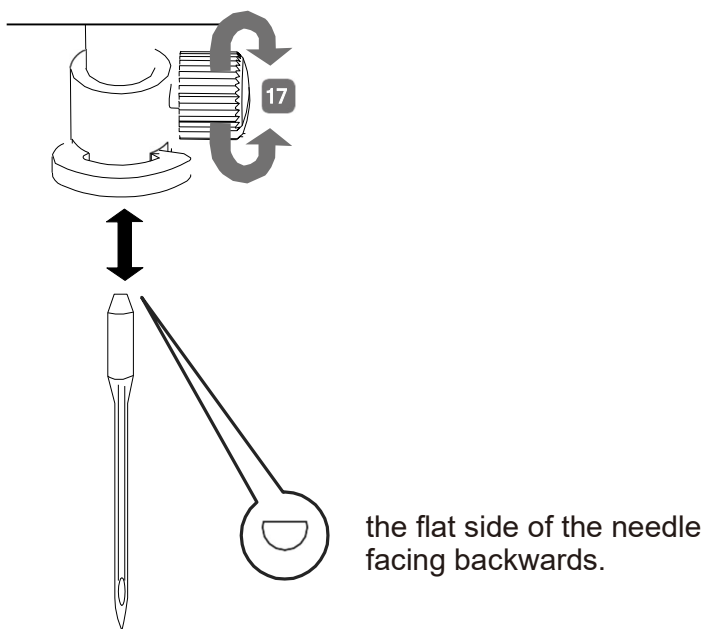


Risk of injury!

There is a risk of injury from accidental operation of the foot control or speed switch.

- Once you have finished working or before you start maintenance, always turn off and unplug the machine.

- Turn the hand wheel **4** towards you until the needle has reached its highest position.
- Loosen the needle holding screw **17** by turning it (anticlockwise) towards you.
- Remove the needle from the needleholder.
- Insert a new needle with the flat side facing backwards. Push the needle upwards until it can go no further.
- Tighten the needle holding screw **17** again (by turning it clockwise).



Buttonholes



Buttonholes

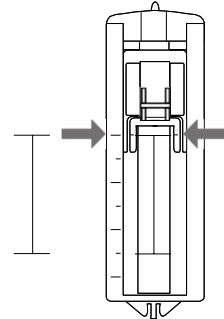


TIP

To determine the correct stitch length, we recommend you sew a test buttonhole on a scrap of fabric.

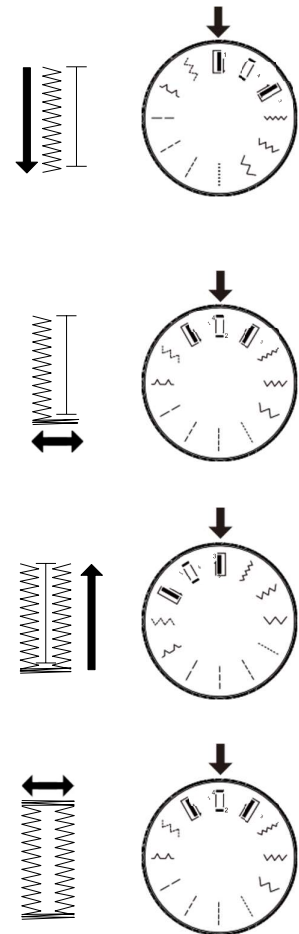
Presser foot..... Buttonhole presser foot **29**
 Program Buttonhole programs

- Set the foot and needle to their highest position.
- Replace the foot with the buttonhole presserfoot. Please read section “Removing and fitting the presser foot”.
- Using a pencil or tailor’s chalk, mark the place on the fabric where you want to sew the buttonhole and mark the required length of the buttonhole.
- As shown, line up the buttonhole foot with the slide at the rear end of the buttonhole.
- Pass the upper thread through the opening on the buttonhole sewing foot and pull both the upper and lower thread to the left-hand side.



Procedure

- Select the program for the left-hand bar “**1**” on the “program selection dial **3**”.
- Lower the foot and sew slowly until the bar is the required length.
- Raise the needle to its highest position and change to the program for the bottom bar “**2**”.
- Sew a few stitches of the bottom bar.
- Raise the needle to its highest position again and change to the program for the right-hand bar “**3**”.
- Now sew the right-hand bar the same length as the bar on the left-hand side.
- Move the needle to its highest position and select the program again for the top bar “**4**”.
- Then sew a few stitches for the top bar as you did for the bottom bar.



Faults and solutions



Malfunction	Cause	Solution
Needle breaks	Needle is bent	Remove and re-insert a new needle (page 19)
	Needle is inserted incorrectly	Re-insert the needle (page 19)
	Needle holding screw too loose	Re-insert the needle (page 19)
Machine stopped by knotted thread	Thread knotted under the fabric	Turn off the power, pull out the thread by turning hand wheel back and forth
Needle can't go through the fabric	Fabric too heavy or hard	Maximum thickness of cloth sewed by this model is 4 layers of 12oz jean (page 6)



Faults and solutions

Malfunction	Cause	Solution
Machine does not run or runs very slowly	Not connected correctly or there is no power	Connect to the power correctly (page 7)
	Batteries are installed incorrectly	Reinstall the batteries making sure they are correct way around (page 7)
	Batteries are low	Use new batteries (page 7)
Missing stitches	Needle is inserted incorrectly	Re-insert the needle (page 19)
	Needle bent or blunt	Remove and re-insert a new needle (page 19)
	Upper thread not threaded correctly	Re-thread the needle (page 12)
Stitches too loose or uneven	Upper thread not threaded correctly	Re-thread the needle (page 12)
	Upper thread too loose or too tight	Adjust upper thread tension (page 16)
Fail to bring up the lower thread	Lower thread running out	Replace with new full bobbin. (page 10)
	Upper thread or lower thread not threaded correctly	Re- thread the upper or lower thread (page 11, 12, 13)
Thread breaks	Needle is inserted incorrectly	Re-insert the needle (page 19)
	Upper thread or lower thread not threaded correctly	Re- thread the upper or lower thread (page 11, 12, 13)
	Needle bent	Remove and re-insert a new needle (page 19)
	Thread is knotted	Cut off the knotted thread, and re-thread
	Upper thread tension too high	Adjust upper thread tension (page 16)
Gathering of fabric	Upper thread tension too high	Adjust upper thread tension (page 16)
	Fabric too thin	Lay some interfacing under the material

**PLEASE AFFIX YOUR PROOF OF PURCHASE/RECEIPT HERE
IN THE EVENT OF A CLAIM UNDER WARRANTY THIS RECEIPT MUST BE PRODUCED.**

WARRANTY

1. Home of Living Brands (Pty) Limited (“Home of Living Brands”) warrants to the original purchaser of this product (“the customer”) that this product will be free of defects in quality and workmanship which under normal personal, family or household use and purpose may manifest within a period of 1 (one) year from the date of purchase (“warranty period”).
2. Where the customer has purchased a product and it breaks, is defective or does not work properly for the intended purpose, the customer must notify the supplier from whom the customer bought the product (“the supplier”) thereof within the warranty period. Any claim in terms of this warranty must be supported by a proof of purchase. If proof of purchase is not available, then repair, and/or service charges may be payable by the customer to the supplier.
3. The faulty product must be taken to the supplier's service centre to exercise the warranty.
4. The supplier will refund, repair or exchange the product in terms of this warranty subject to legislative requirements. This warranty shall be valid only where the customer has not broken the product himself, or used the product for something that it is not supposed to be used for. The warranty does not include and will not be construed to cover products damaged as a result of disaster, misuse, tamper, abuse or any unauthorised modification or repair of the product.
5. This warranty will extend only to the product provided at the date of the purchase and not to any expendables attached or installed by the customer.
6. If the customer requests that the supplier repairs the product and the product breaks or fails to work properly within 3 (three) months of the repair and not as a result of misuse, tampering or modification by or on behalf of the customer, then the supplier may replace the product or pay a refund to the customer.
7. The customer may be responsible for certain costs where products returned are not in the original packaging, or if the packaging is damaged. This will be deducted from any refund paid to the customer.

HOME OF LIVING BRANDS (PTY) LTD (JOHANNESBURG)

JOHANNESBURG
CAPE TOWN
DURBAN

TEL NO. (011) 490-9000
TEL NO. (021) 535-0600
TEL NO. (031) 792-6000

www.homeoflivingbrands.com
www.empisal.co.za
www.facebook.com/Empisal